



Project Zapdos

Forlì Aircraft Emporium



Rethinking the conventional



Beechcraft Baron 58



Diamond DA50



Piper PA-46



Pilatus PC-12



Our concept

Tapered, high aspect ratio wing

Split flaps

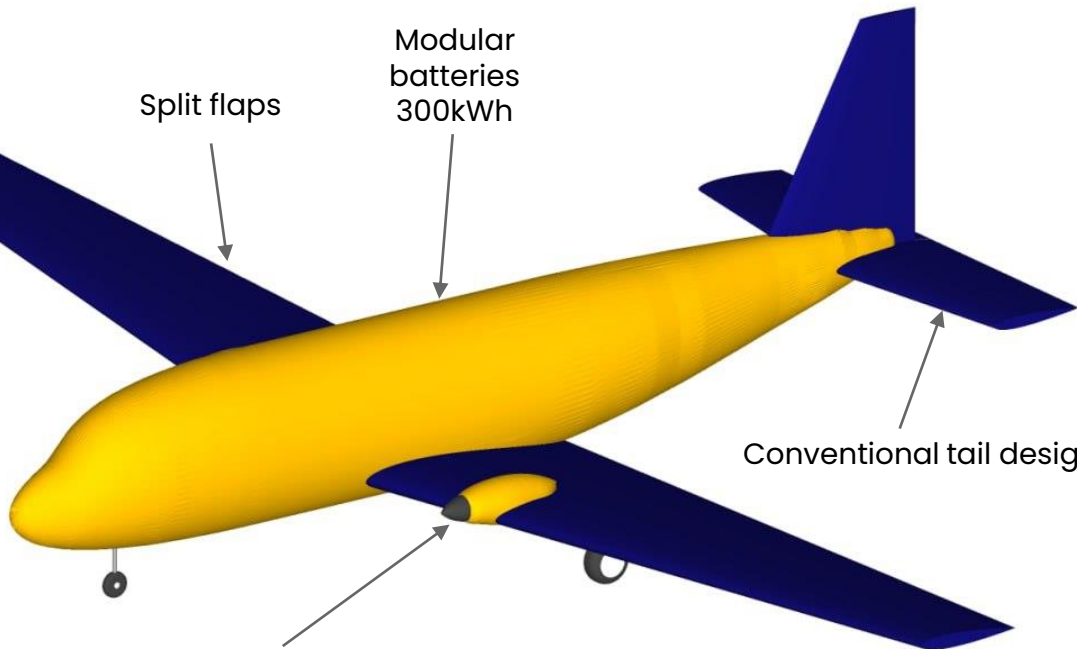
Modular batteries
300kWh

Conventional tail design

Twin 220kW electrical
power plant

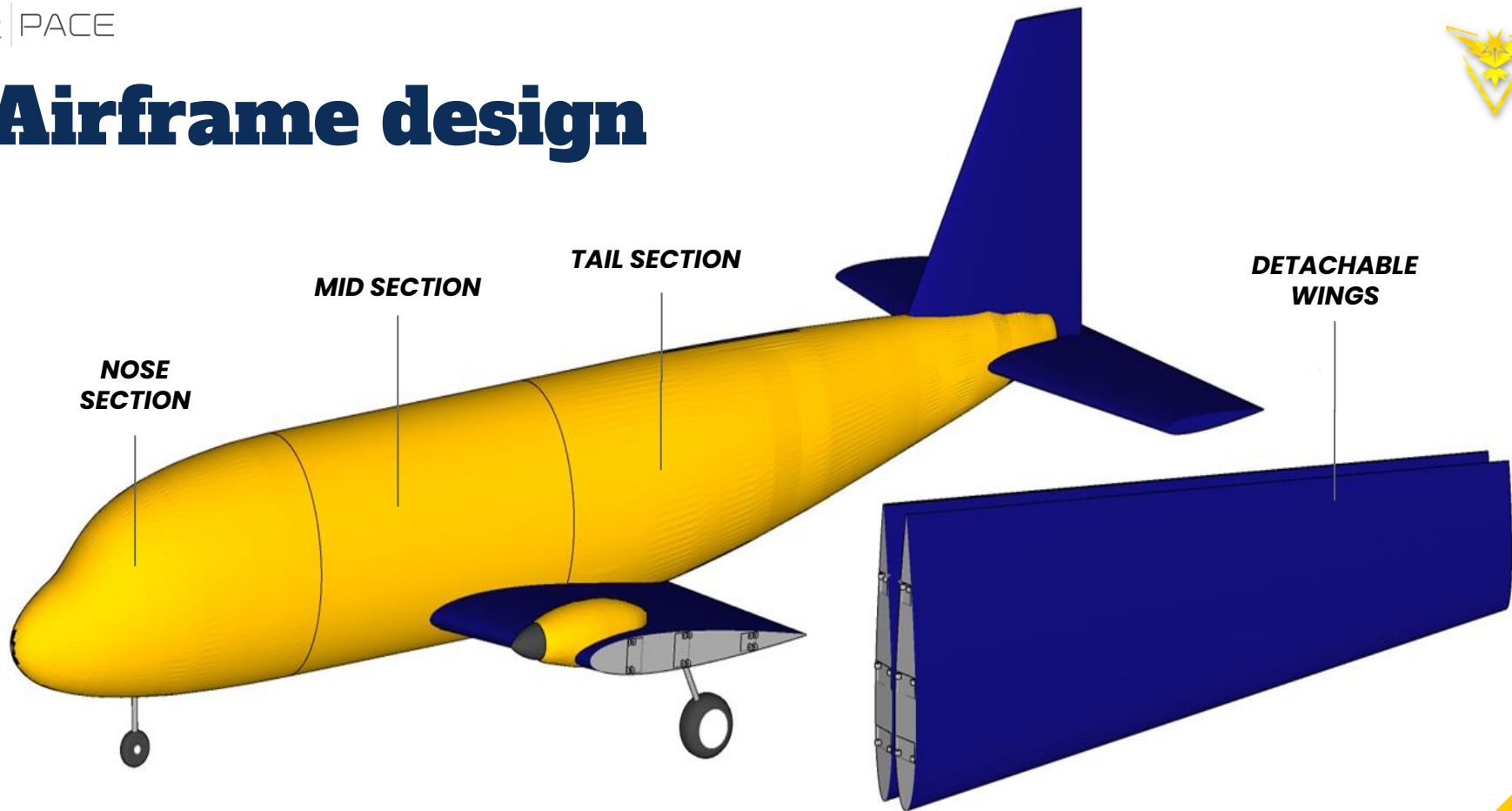
Twisted wingtips

Wingspan	15.8 m
Wing surface	24m ²
Take-Off weight	2960 Kg
Cruise speed	150 kn
Range	170 NM

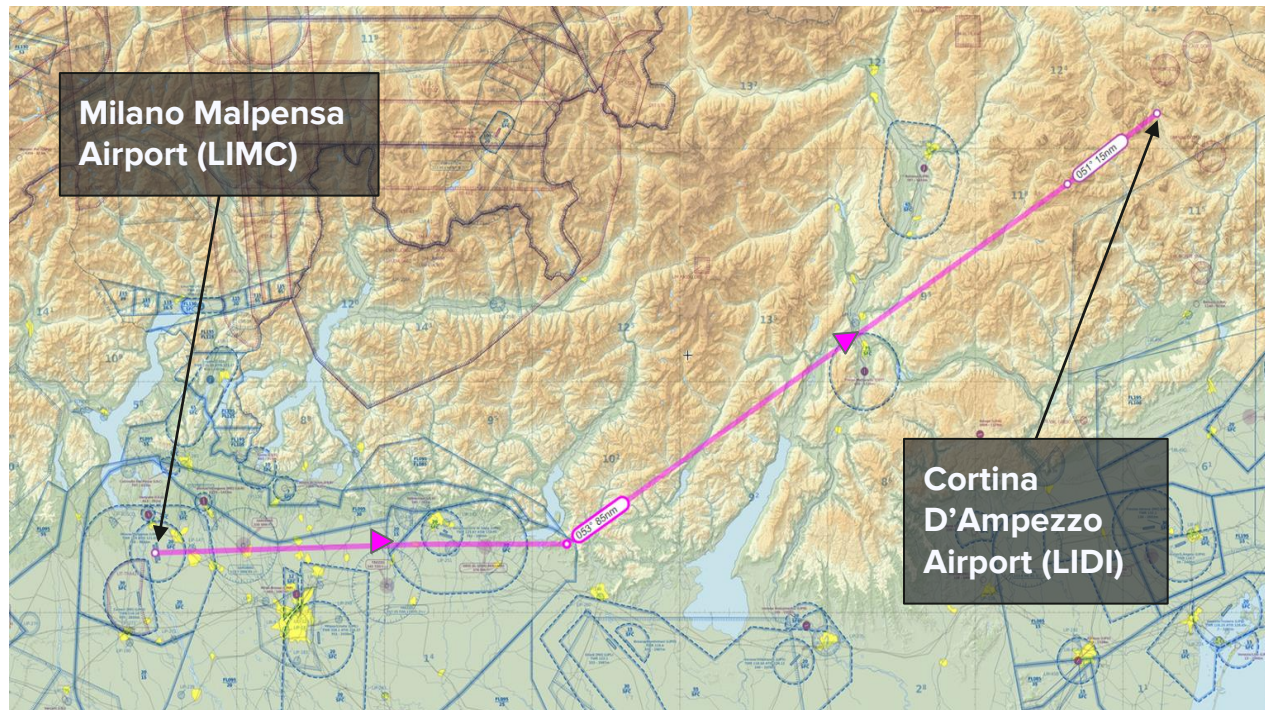




Airframe design



The mission



- Flight data:**
- Flight time: 1hr 18min
 - Used battery capacity: 73%
 - Cruise altitude: 11500 ft
 - Passengers: 4



A look backward, A step forward

Pushing the limits:
The pioneering age in 2050

- ★ 2000 NM in a single flight
- ★ 16 hours endurance



Wright-Bellanca WB-2

Plenty of room for upgrades

- Autonomous solar recharge
- Advanced energy storage
- Multiple payload configurations
- Lighter structural materials



Solar Impulse 2

Possible applications

- Short range commuter/cargo
- General aviation private aircraft
- Emergency services
- Research platform

